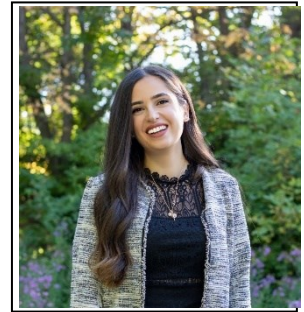


ICRERA 2025

14th INTERNATIONAL CONFERENCE ON RENEWABLE ENERGY RESEARCH AND APPLICATIONS

Julie Matarweh

Boise State University, Idaho, USA



Paper ID : 315

Paper Title : Seamless Transition of Microgrids between Grid-Connected and Islanded Modes

Bio :

Julie Matarweh is a Development Engineer at AES specializing in solar PV and battery energy storage systems (BESS). She holds an M.Sc. in Electrical Engineering from Boise State University and is currently pursuing a Ph.D. in renewable integration with the grid at Boise State.

Julie's professional experience spans roles as a BESS Application Engineer at Blue Ridge Power, Associate Project Engineer at Schweitzer Engineering Laboratories, and Solar Design Engineer at Kavar Energy. She has worked on utility-scale renewable projects covering system design, modeling, and site evaluation. Her expertise includes energy production modeling, BESS dispatch optimization, and grid integration studies. Julie is a Certified Energy Manager (CEM) and an active member of IEEE, PES, and AEE.